

Requirements:

TillebiERG is one of those places where the adolescents meet for a forbidden cigarette, for a chat with like-minded and maybe a shy first kiss. A place on the periphery of Differdange and on the edge of the forest overlooking the town, located at a popular Sunday afternoon dog walking path.

Conceptual background:

When two personalities meet and come together, they very often create jointly an unique object. And then soar to heaven with happiness.

The intention:

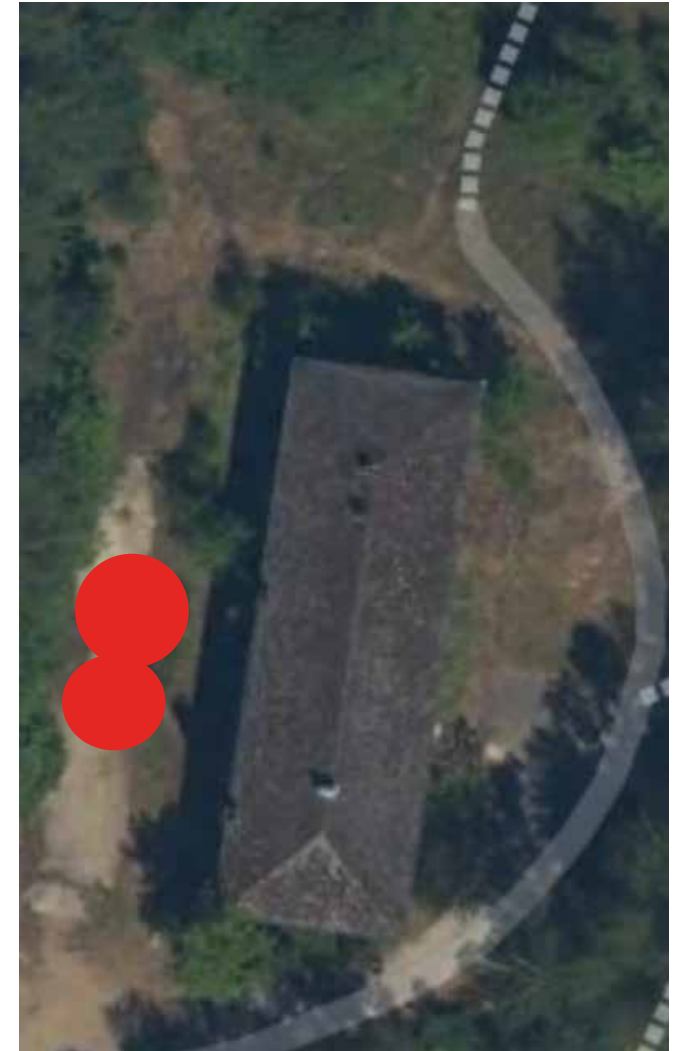
In my installation, I want to create an ,object' that joins two hills into one. And at the same time it is light and robust. These are the qualities that teenagers in love most often dream about in their new relationship. The installation will become a favourite place for stargazing and socialising at any time of year.

Implementation:

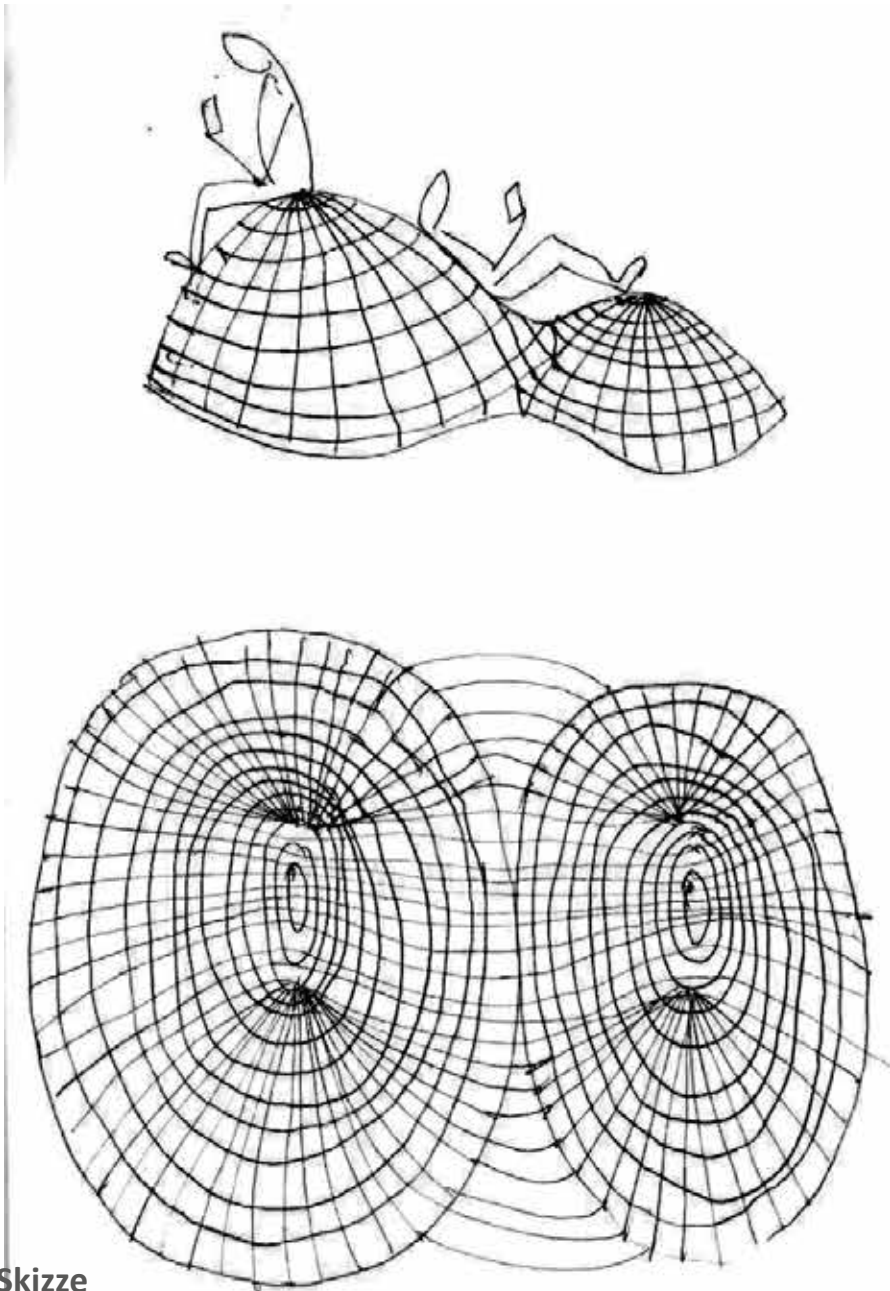
steel armature is used as a material for the object, thereby conveying the airiness of the setting. At the same time, it is a resistant material against vandalism and fire.

Teenagers can participate in creating the shape of this object and submit their ideas.

SPACE TILLEBIERG: the front yard of the abandoned house at TillebiERG.



Over the clouds. Inesa Babkovich



Skizze



Material